

# GNU Global Mobility Program



경상국립대학교  
Gyeongsang National University



# | Contents |

**01 About GNU and GGMP**

**02 Application Procedure for GGMP**

**03 Benefits for GGMP Students**



# About GNU and GGMP



경상국립대학교  
Gyeongsang National University

# Location



# About GNU



## 경상국립대학교

### Gyeongsang National University

- Established: 1948
- University Type: National
- Organization: 5 campuses, 17 colleges, 11 graduate schools, 106 departments
- No. of Student: About 27,706  
(Undergraduate 24,756, Graduate 2,950)
- No. of Staff: 3,332  
(faculty 2,504, Administration staff 828)

경상국립대학교

Gyeongsang National University

# What is GGMP?

- ☑ GGMP, which stands for the **GNU Global Mobility Program**, offers students the opportunity to engage in their studies as **exchange participants at GNU**.
- ☑ This initiative not only facilitates **academic growth** but also encourages students to immerse themselves in a **wide array of cultural encounters**, spanning both scholarly and non-academic dimensions.

# 5 Campuses

3 Campuses in Jinju (Gajwa, Chilam, Naedong)

Changwon Campus

Tongyeong Campus

Gajwa Campus

Chilam Campus

Changwon Campus

Tongyeong Campus

Note: The main campus is the **Gajwa Campus**, where the dormitory and international office are located.

# Dormitory

Providing a comfortable living environment

## Dormitory Expenses

(Currency: KRW, subject to change)

Building No.	5	7, Gaecheok	1BTL(8,9)	2BTL(10,11)	3BTL(1-4)	Facilities
Cost	555,750	569,790	582,660	643,500	685,620	Beds, desks, chairs, wardrobes, bookshelves, etc.

## Meal Plan

(Currency: KRW, subject to change)

No. of Meals	300 meals	230 meals	190 meals	150 meals	120 meals	Note
Cost	2,200	2,300	2,700	3,000	3,400	<b>Cannot be changed after payment</b>



# Dormitory Facilities

Student dormitory interior, exterior and convenience facilities

Building 5 (interior, exterior) Building 1-4 (interior, exterior) Building 6-7 (interior, exterior)



# Dormitory Facilities

Student dormitory interior, exterior and convenience facilities

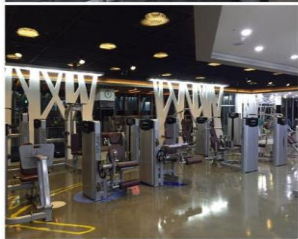
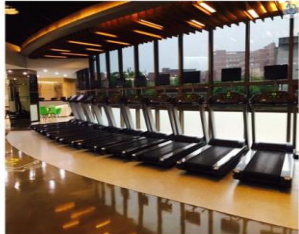
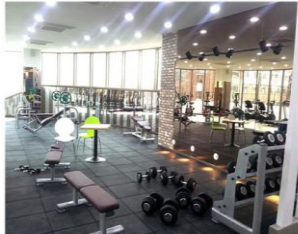
**Building 8,9(interior, exterior)**

**Building 10,11(interior, exterior)**



# Dormitory Facilities

Student dormitory interior, exterior and convenience facilities



# Contact

## International Program Manager

**Responsible for All countries except China**

**Ms. Jeong-seon KIM**

Tel: +82-55-772-0273, Fax: +82-55-772-0269

E-mail: [kk\\_jjj@gnu.ac.kr](mailto:kk_jjj@gnu.ac.kr)

**Responsible for China**

**Ms. Min-ju KIM**

Tel: +82-55-772-0275, Fax: +82-55-772-0269

E-mail: [mjkim8812@gnu.ac.kr](mailto:mjkim8812@gnu.ac.kr)

Homepage: <https://www.gnu.ac.kr/international/main.do>

Address: OIEC(Office of International & External Cooperation), Gyeongsang National University, 501 Jinju-daero, Jinju, 52828, Republic of Korea

# Application Procedure for GGMP



경상국립대학교  
Gyeongsang National University

# Requirements for GGMP

- ☑ At GNU, **most courses are taught in Korean(around 90%),** and **some taught in English(around 10%).** If you are fluent in Korean, you may take any courses that you want.
- ☑ However, **if you are not fluent in Korean, please bear in mind that your course registration can be limited.**  
You may not find any relevant courses with your majors and even your course application can be rejected by course lecturers.
- ☑ So, we strongly advise you to take good care of your credits for your graduation at your home university before coming to GNU.
- ☑ Graduate students **will officially be admitted** only after being **reviewed and approved by their respective department or laboratory at GNU.**

# Programs Available in GNU

[Gajwa Campus-Jinju City]

Colleges	Departments
Humanities	Language and Literature (Korean, German, Russian, French, English, Chinese), History, Philosophy, Korean Classics in Chinese, Ethnic Dance
Social Science	Economics, Social Welfare, Sociology, Psychology, Political Science, Public Admin.
Natural Science	Physics, Life Science, Mathematics, Food and Nutrition, Clothing and Textiles, Information Statistics, Geology, Computer Science(Computer Science major), Chemistry
Business	Management Information System, Business Administration, Intl' Trade, Accounting
Engineering	Mechanical, Aerospace and Information Eng. (Mechanical Eng., Aerospace and Software Eng.), Nano- New Materials Eng., Industrial Systems Eng., Architectural Civil Eng., Architecture, Semiconductor Eng., Chemical Eng., Electrical Eng., Electronics Eng., Control and Instrumentation Eng.
Agriculture and Life Science	Food and Resources Economics, Forest Environmental Resources, Environmental Materials Science, Agricultural Plant Science, Animal life science, Agrochemical Food Eng., Agrosystems Eng. (Biotechnology Industry Mechanical Eng., Area-based Environmental Eng.)
Law	Law



# Programs Available in GNU

[Chilam Campus-Jinju City]

Colleges	Departments
Life Sciences	Anti-aging Advanced Materials Science, Pharmaceutical Engineering, Computer Science(Computer Software major)
Construction& environmental Engineering	Interior Materials Engineering, Landscape Architecture, Textile Design, Environmental Engineering
Integrated Technology Engineering	Mechanical Material Convergence Engineering, Mechatronics Engineering, Automotive Engineering, Convergence Electronic Engineering, Energy Engineering
Humanities and Social Science	Social Welfare, Children and Family Studies, English
Business	Smart Logistics and Commerce

## ※ Note

- We advise you to apply for the same or similar major or department at GNU as with your home university. All the colleges, departments(majors), and course information can be found at <https://www.gnu.ac.kr/eng/cm/cntnts/cntntsView.do?mi=8527&cntntsId=4497>

After choosing a department or a major, please state the selected department(major) in the application form.



# Procedure and Schedule

Step	Nomination	Application	Announcement of Acceptance	Sending Certificate of Admission	Semester Begins
<b>Spring</b>	10. 15.	10. 31.	Mid November	Mid December	Early March
<b>Fall</b>	4. 15.	4. 30.	Mid May	Mid June	Early September

## 1) Nomination

- Please send an email containing following information to GNU through the International Program Manager of candidate's home university
  - **Candidate's name in English(same as on passport)**
  - **Undergraduate or Graduate**
  - **Proposed department at GNU**
  - **Proposed exchange period at GNU**

# Procedure and Schedule

## 2) Application

- ① International program manager should send **scanned version of required documents for students' application** by the deadline

### ◎ Required Documents

- **Official Academic Transcript** (issued by the home institution)
- ※ Graduate students must also submit the official transcript of their undergraduate academic records.
- **Official Certificate of Enrollment** (issued by the home institution)
- **Copy of Passport**
- **Medical Checkup** (Form Provided)
- **Permission for the Use of Personal Information**(Form Provided)
- **Bank Balance(own):** More than \$8000/per year(More than \$4000/per one semester)

- ② Students should complete online application form by the deadline
  - Link for online application will be sent to international program manager

# Procedure and Schedule

## 3) Notification of Acceptance

- Notification of Acceptance will be sent to the International Program Manager of each university via email.

## 4) Sending Admission Documents

- We shall dispatch the admission documents to the International Office of each respective university.  
We kindly request that you subsequently facilitate their dissemination to the students, enabling them to initiate the visa application process.

# Course Selection

- ☑ **Course registration** is scheduled **one month prior to the commencement of the semester**. Also, there is the option to apply during the additional course registration period within the initial week following the commencement of the semester.
- ☑ While we recommend exchange students to take courses among their own departments' curriculum, **they are also allowed to take any other preferred courses in other departments.**

## ※ Note

- For an overview of courses taught in a foreign language, kindly refer to the link provided below.  
<https://www.gnu.ac.kr/main/cm/cntnts/cntntsView.do?mi=1149&cntntsId=1145>
- The course list for **the fall semester** will be updated **in August**, and the course list for the **spring semester** will be updated **in February**.
- Apart from the list, there is a **basic Korean course for beginners and for intermediates.**

# Academic Information

☑ **Spring Semester:** March 1<sup>st</sup> ~ Mid June

**Fall Semester:** September 1<sup>st</sup> ~ Mid December

☑ **Credit System**

- At GNU, **1 credit** consists of **50 minutes coursework per week** for **15 weeks** during the semester.

# Arrival Information

☑ **Pick-up service** will be provided **from ICN to GNU.**

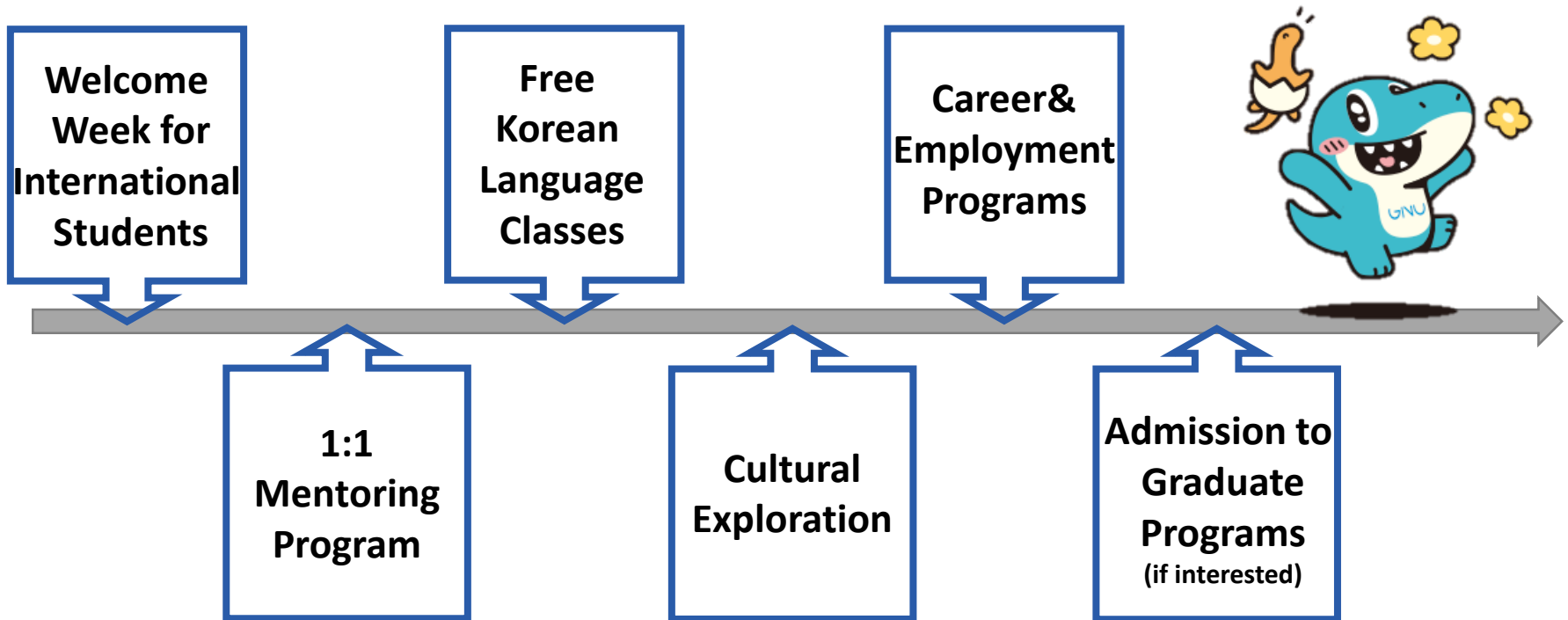
☑ **Orientation**

- Orientation will be held for the incoming international students at the end of Feb. or early Mar. for Spring semester and end of Aug. or early Sept. in the fall semester.

# Benefits for GGMP Students



# Benefits for GGMP Students



# Welcome Week

- **Airport Pickup Service:** We provide a pick-up bus from the airport to GNU.
- **Course Registration:** Students may enroll in the course with a Buddy for up to one week following the commencement of the new semester.
- **Alien Registration:** We offer guidance on Alien Registration for a secure life in Korea.





# 1:1 Mentoring Program

- Support when Immigration and Dormitory check-in
- Help with course registration and adjustment to school life from the beginning of the semester
- Support for Korean language and department classes **through continuous exchange with Korean students(Buddy Program) or Staff through 1:1 matching**
- Participate in local and University festivals



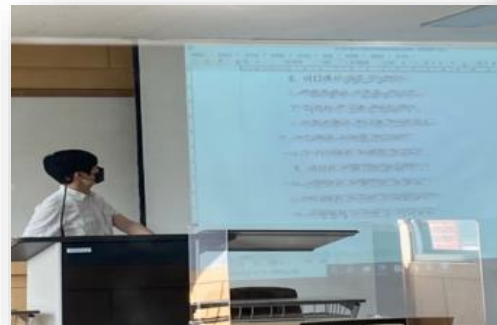
# Korean Language Classes

## Purpose

- Korean conversation classes and TOPIK test preparation classes for foreign students
- Improve Korean conversational skills to increase academic achievement and support adaptation in Korea

## Period and Benefits

- Period: 8~9 weeks <48-54 Hours>
- Completion criteria: Awarding a certificate of attendance for **achieving 80% or higher attendance.**
- Completion benefits: **Tuition waiver**



# Cultural Exploration

Understanding Korean culture through cultural experiences at attractions near Jinju

## Purpose

- Providing opportunities for cultural experience and enhancing understanding of Korea to enhance university life satisfaction

## Summary for Program

- Period: During the semester (end of March - May / end of September - November)
  - No. of Session: 2-3 times per semester
- (※ The number of sessions and schedule may change depending on the situation each semester)

# Cultural Exploration

Understanding Korean culture through cultural experiences at attractions near Jinju



# Cultural Exploration

Understanding Korean culture through cultural experiences and having fun activities



# Cultural Exploration -Movie Night



- GGMP students may have the **chance to collectively watch a movie at a local theater.**

※ Please note that the scheduling and frequency of this activity may be subject to adjustment based on the prevailing circumstances.



# Cultural Exploration -Sports Activities

- At the GNU Sports Complex, we **offer opportunity to partake in one-day session of experiencing various sports activities**, including swimming, Pilates, and yoga at **no additional cost**.
  - **An International Students' Sports Day** is hosted during the spring semester, providing students with the opportunity to engage in a diverse range of sporting activities.
- ※ Please note that the scheduling and frequency of this activity may be subject to adjustment based on the prevailing circumstances.



# Career & Employment Programs

- We provide **valuable opportunities** for students to participate in a **range of employment-related initiatives**, including involvement in job fairs and related activities.





GNU

THANK YOU!

